

The ReelView System

TAKE CONTROL OF YOUR GAMING OPERATION

Don't use separate uncoordinated systems to manage on-site floats, machine movements and upgrades, service calls and site analysis. The ReelView system combines the individual functions normally performed by three or more different systems into an integrated real-time environment giving you, the operator, complete control. This cohesive set of applications has the potential to revolutionise the way you work, saving you time, reducing errors and increasing security.

ReelView Reports

BRING YOUR DATA TO LIFE

Visualise trends, compare performance and track your assets – all from a simple point and click interface. Compile reports with graphs, tables and pie charts detailing all aspects of your gaming operation. Access your data at anytime from anywhere and customize your report parameters to highlight the issues that matter.

ReelView Explorer

SYSTEM CONFIGURATION MADE EASY

ReelView Explorer allows anyone with gaming machine knowledge to configure and maintain the ReelView Database. Add new sites, populate them with machines, specify machine configurations, allocate service providers to sites, schedule machine movements and changes. ReelView is the single environment that does it all.

ReelView Onsite

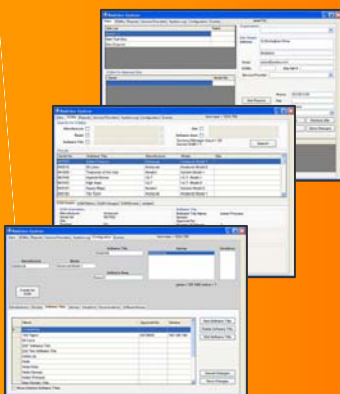
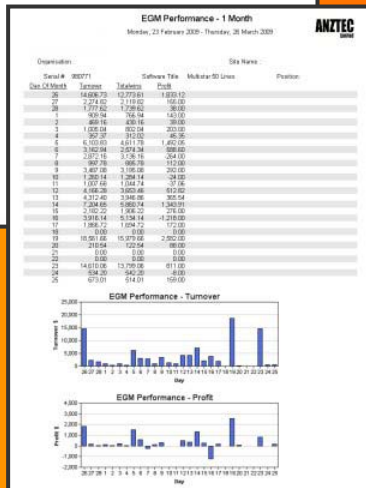
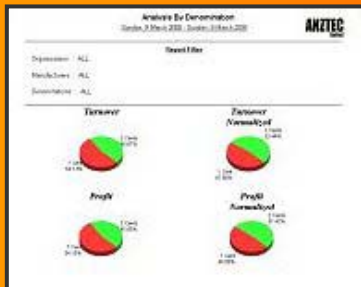
STREAMLINE ON-SITE FLOAT MANAGEMENT

ReelView OnSite is a web-based application that takes the effort out of the repetitive, error-prone activities necessary when operating a gaming site on a day to day basis. It manages the gaming float, tracks hopper levels, accounts for refills, records cancel credit payouts and compiles all mandatory DIA compliance forms. Because ReelView is a real-time system, you don't need to wait for the nightly roll-over to balance your site, you can do it at anytime.

ReelView Dispatch

BRING YOUR SERVICE PROVIDER INTO THE LOOP

ReelView Dispatch gives your nominated service provider a window into your site. Gaming machine faults are automatically reported and the real-time environment allows technicians to see the status of all machines prior to even setting foot on the site. Couple this with the ability to manage change and movement orders and you have a powerful tool that will change the way you interact with your service department.



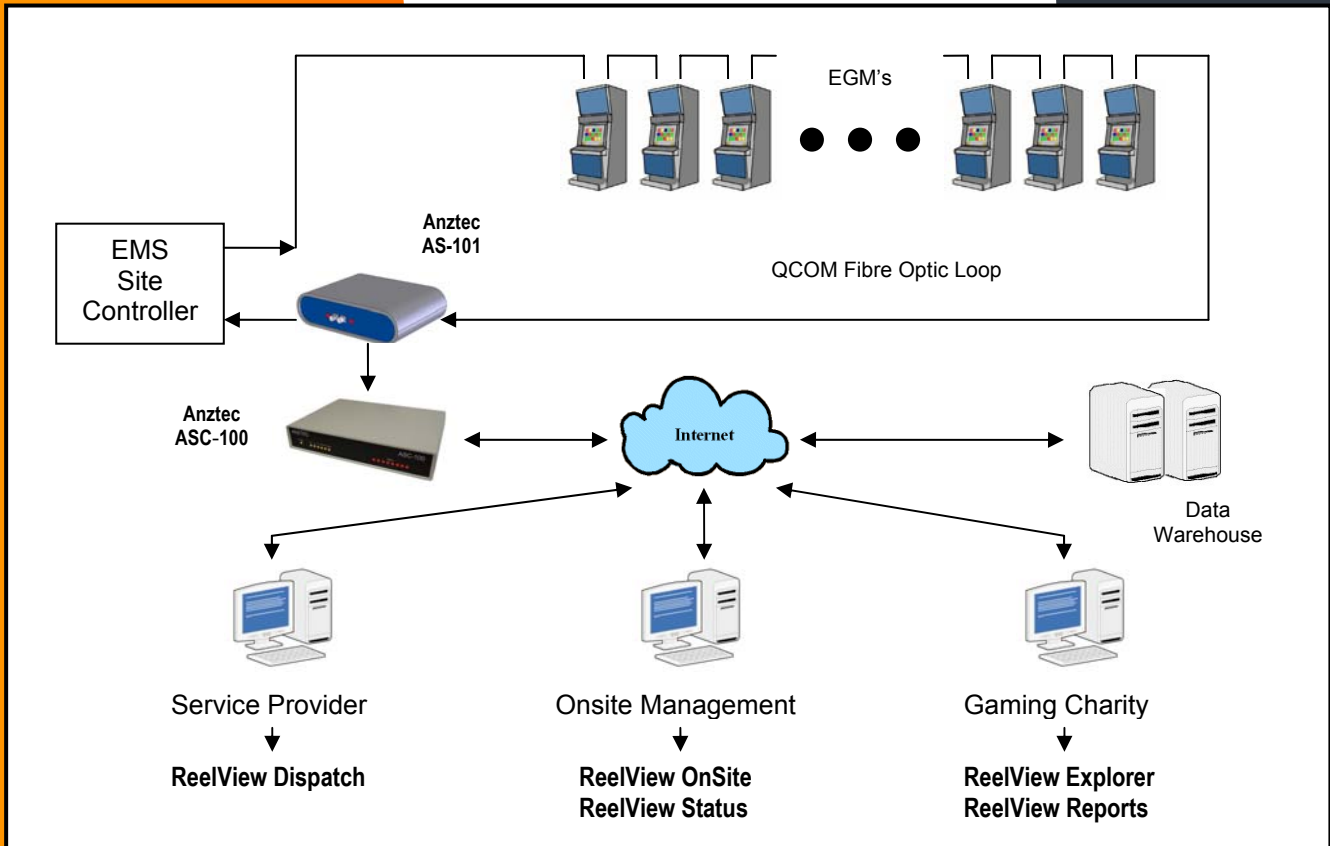
7C Birmingham Drive
P.O. Box 3288
Christchurch 8024
New Zealand

Ph. +64 3 3383139
Fax. +64 3 3383725
Email: sales@anztec.com

ANZTEC
LIMITED

System Overview

The ReelView System uses the Internet to transport data from sites to the data warehouse where it is accumulated on a high reliability fault tolerant platform. Reporting and management applications then use the Internet to retrieve this information and process it.



System Components

ASC-100 SITE CONTROLLER

The Site Controller reads data from the Sniffer(s), collates it, and sends it to the data warehouse via the Internet. It has enough battery backed memory to keep logging data through an Internet outage and is capable of retaining memory contents for up to ten years.

AS-101 SNIFFER

Fully NZDIA approved, the Anztec ReelView Sniffer is the component responsible for making a copy of all communications data flowing in the QCOM loop and sending it to the Site Controller. One Sniffer is required for each loop on the site.



7C Birmingham Drive
P.O. Box 3288
Christchurch 8024
New Zealand

Ph. +64 3 3383139
Fax. +64 3 3383725
Email: sales@anztec.com

ANZTEC
LIMITED