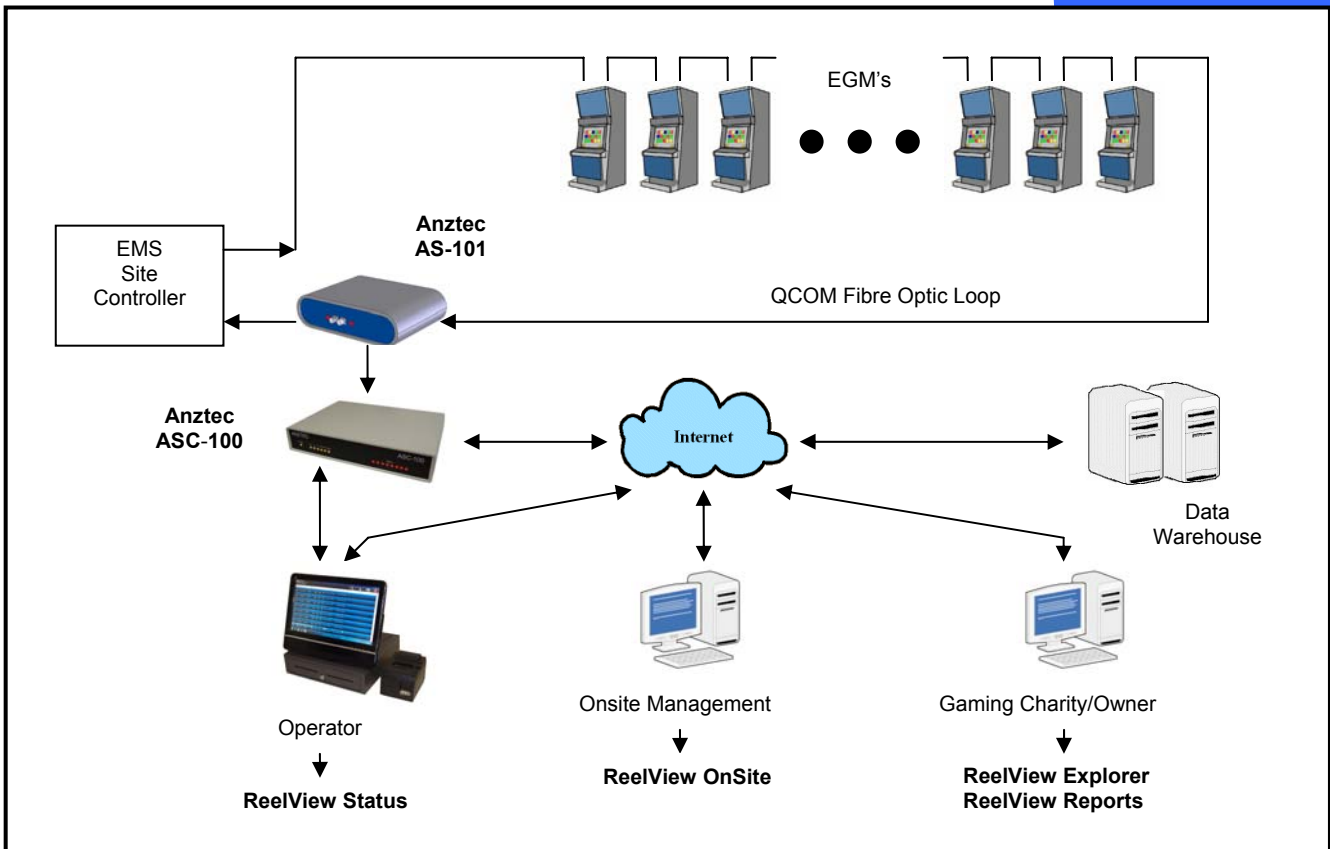


ReelView System Overview

ReelView

The ReelView System collates data from multiple sites and, using the internet, transports it back to a central data store. The ReelView suite of management and reporting applications are then used to process the data and present it to various end users in a format dictated by their individual requirements.



System Components

ASC-100 SITE CONTROLLER

The Site Controller reads data from the Sniffer(s), collates it, and sends it to the data warehouse via the Internet. It has enough battery backed memory to keep logging data through an Internet outage and is capable of retaining memory contents for up to ten years.

AS-101 SNIFFER

Fully NZDIA approved, the Anztec ReelView Sniffer is the component responsible for making a copy of all communications data flowing in the QCOM loop and sending it to the Site Controller. One Sniffer is required for each loop on the site.

STATUS PACKAGE

Touch screen Point Of Sale unit, preloaded with Anztec ReelView Status software, cash drawer, and printer. Status data is updated independently of the internet, maintaining real time operation should there be a temporary internet outage.



The ReelView System

TAKE CONTROL OF YOUR GAMING OPERATION

Don't use separate uncoordinated systems to manage on-site floats, machine movements and upgrades, service calls and site analysis. The ReelView system combines the individual functions normally performed by three or more different systems into an integrated real-time environment giving you, the operator, complete control. This cohesive set of applications has the potential to revolutionise the way you work, saving you time, reducing errors and increasing security.

ReelView Status

REALTIME INFORMATION

ReelView Status allows you to provide the best possible service to your players by detecting refills and cancel credits as soon as they occur. Shortening response times and reducing the number of visits to the gaming floor results in less EGM downtime and happier players and attendants. Locate security problems such as open doors or note stackers. Find machines with faults and send service required notification to your allocated service provider without having to pick up the phone. Printed payment slips ensure refills and cancel credits are accurately dispensed whilst also promoting easy float reconciliation. The cash drawer restricts access to the float and assists tracking of refills/hand pays.

Other features include: PIN number security allowing individual permissions for each attendant. Harm minimization RoomCheck function with timer. Shift reports emailed at the end of each shift. Accurate hopper and stacker level tracking. Early stacker empties logging. Audio and strobe attention required indicators. EGM service required message sent via email or SMS to service company.

ReelView Reports

BRING YOUR DATA TO LIFE

Visualise trends, compare performance and track your assets – all from a simple point and click interface. Compile your own reports with graphs, tables and pie charts detailing all aspects of your gaming operation. Access your data at anytime from anywhere and customize your report parameters to highlight the issues that matter.

ReelView Explorer

SYSTEM CONFIGURATION MADE EASY

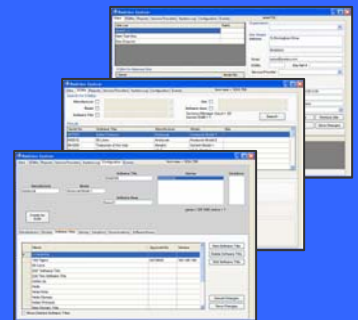
ReelView Explorer allows authorised users to configure and maintain the ReelView Database. Add new sites, populate them with machines, specify machine configurations, allocate service providers to sites (even individual EGMs), schedule machine movements and changes. ReelView Explorer is the single environment that does it all.

ReelView Onsite

STREAMLINE YOUR ON-SITE MANAGEMENT

ReelView OnSite is a web-based application that takes the effort out of the repetitive, error-prone activities necessary when operating a gaming site on a day to day basis. It manages the reconciliation process, calculates GMP, and compiles mandatory jurisdictional compliance forms. As ReelView is a real-time system, you don't need to wait for the nightly roll-over to balance your site, you can do it at anytime.

ReelView



7C Birmingham Drive
P.O. Box 3288
Christchurch 8024
New Zealand

Ph. +64 3 3383139
Email: sales@anztec.com
www.anztec.com

ANZTEC
LIMITED